

# WELLGLASS

## EV.. PT Series spot lights

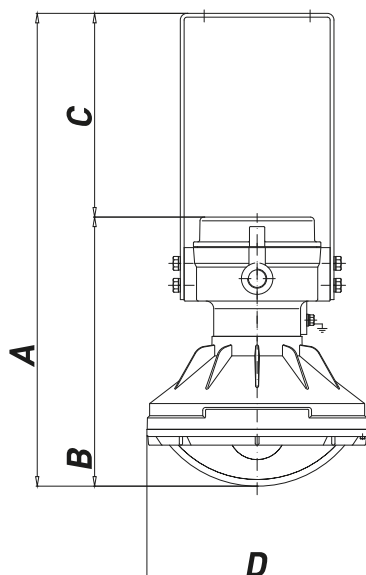


Spot lights are used where an high illumination is required, without causing neither dazzling nor light pollution.

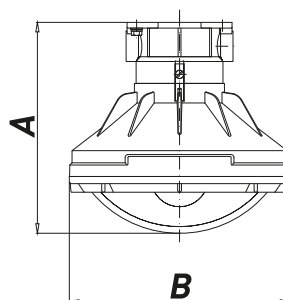
### TECHNICAL FEATURES

<b>Material</b>	Aluminium with low content of copper
<b>IP rating</b>	IP66
<b>Ambient temperature range</b>	-52°C to +60°C
<b>Approvals</b>	INERIS 01ATEX0019X (standard) TR CU (marking upon request, ordering code to be required)
<b>Marking</b>	II 2 GD Ex d IIC T(**) Gb                      for all EV.. Ex de IIC T(**) Gb                      for all EVde.. Ex tb IIIC T(**) Db IP66 ** T4/135°C, T3/200°C
<b>Gaskets</b>	O-ring made of Nitrile Rubber (NBR)
<b>Surface treatment</b>	Green colour polyurethane painting cycle RAL6003 (other colour available upon request)
<b>Entries</b>	N° 2 entries M25x1,5 (EVde and EVCC version) (plugs and cable glands excluded)
<b>Hardware and screws</b>	AISI304 Stainless steel external hardware and screws
<b>Lamps</b>	Included
<b>Rated operation voltage (UE)</b>	230V (standard) 220V, 240V (marking upon request)
<b>Frequency</b>	50/60 Hz
<b>Power factor</b>	> 0,95

## Dimensions EVde PT



## Dimensions EVCC PT



## (EVde PT) Spot lights

TYPE	CODE	LAMP [W]	LAMP. TYPE	TEMP. CLASS	VOLTAGE	DIMENSIONS [mm]				AMBIENT TEMPERATURE
						A	B	C	D	
EVDE-PT/HA	A0406.022002	70	HALOGEN	T3*	230V 50/60HZ	496	282	214	231	(-52°;+60°)

\* In case of maximum ambient temperature reach +40°C, temperature class changes into T4 (ordering code to be required)

## (EVCC PT) Spot lights

TYPE	CODE	LAMP [W]	LAMP. TYPE	TEMP. CLASS	VOLTAGE	DIMENSIONS [mm]		AMBIENT TEMPERATURE
						A	B	
EVCC-PT/HA	A0406.222006	70	HALOGEN	T3*	230V 50/60HZ	221	231	(-52°;+60°)

\* In case of maximum ambient temperature reach +40°C, temperature class changes into T4 (ordering code to be required)

## WELLGLASS

# Serie EVCC-PR tank inspection lights

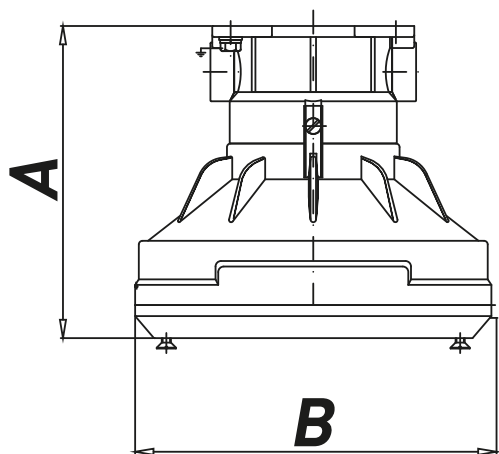


Tank inspection lights suitable for ON-SHORE and OFF-SHORE application by suitable painting cycle (upon request).

## TECHNICAL FEATURES

<b>Material</b>	Aluminium with low content of copper
<b>IP rating</b>	IP66
<b>Ambient temperature range</b>	-52°C to +40°C
<b>Approvals</b>	INERIS 01ATEX0019X (standard) IECEX INE 15.0031X CoC TR CU 012/2011 (marking upon request, ordering code to be required)
<b>Marking</b>	II 2 GD Ex d IIC T3 Gb Ex tb IIIC T200°C Db IP66
<b>Gaskets</b>	O-ring made of Nitrile Rubber (NBR)
<b>Surface treatment</b>	Green colour polyurethane painting cycle RAL6003 (other colour available upon request)
<b>Entries</b>	N° 2 entries M25x1,5 (plugs and cable glands excluded)
<b>Hardware and screws</b>	AISI304 Stainless steel external hardware and screws
<b>Lamps</b>	Included
<b>Rated operation voltage (UE)</b>	230V (standard) 220V, 240V (marking upon request)
<b>Frequency</b>	50/60 Hz
<b>Accessories available upon request</b>	Fixing flange for porthole

## Dimensions EVCC-PR



### (EVCC-PR) Tank inspection lights

TYPE	CODE	LAMP [W]	LAMP. TYPE	TEMP. CLASS	VOLTAGE	DIMENSIONS [mm]		AMBIENT TEMPERATURE
						A	B	
EVCC-PR2/HA	A0406.222008	53	HALOGEN	T3	230V 50/60HZ	153	165	(-52°;+40°)*
EVCC-PR3/HA	A0406.222009	70	HALOGEN	T3	230V 50/60HZ	170	195	(-52°;+40°)*

\* Maximum admissible ambient temperature

## LED LIGHTING

# LED EV.. Series spot lights



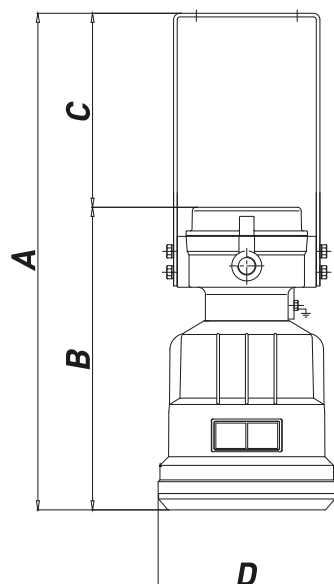
Spot lights are used where an high illumination is required, without causing neither dazzling nor light pollution.

Due to LED technology, these luminaires are especially resistant to shock or vibration and free from infrared and ultraviolet wavelengths.

## TECHNICAL FEATURES

<b>Material</b>	Aluminium with low content of copper
<b>IP rating</b>	IP66
<b>Ambient temperature range</b>	-52°C to +60°C
<b>Approvals</b>	INERIS 01ATEX0019X (standard) IECEX INE 15.0031X CoC TR CU 012/2011 (marking upon request, ordering code to be required)
<b>Marking</b>	II 2 GD Ex de IIC T(**) Gb Ex tb IIIC T(**) Db IP66 ** T5/T100°C, T4/T135°C
<b>Gaskets</b>	O-ring made of Nitrile Rubber (NBR)
<b>Surface treatment</b>	Green colour polyurethane painting cycle RAL6003 (other colour available upon request)
<b>Entries</b>	N° 2 entries M25x1,5 (plugs and cable glands excluded)
<b>Hardware and screws</b>	AISI304 Stainless steel external hardware and screws
<b>Lamps</b>	Included
<b>Rated operation voltage (UE)</b>	115/240V, 24Vdc
<b>Frequency</b>	50/60 Hz

## Dimensions LED EV



### LED EV.. Spot lights

TYPE	CODE	LAMP [W]	LAMP. TYPE	TEMP. CLASS	VOLTAGE	DIMENSIONS [mm]				AMBIENT TEMPERATURE
						A	B	C	D	
EVDE-3/LED	A0404.031003	18	LED	T4*	115/240V 50/60HZ	547	333	214	195	(-52°;+60°)
EVDE-3/LED	A0404.031010	18	LED	T4*	24VDC	547	333	214	195	(-52°;+60°)

\* In case of maximum ambient temperature reach +40°C, temperature class changes into T5 (ordering code to be required)

## LED LIGHTING

# LED EVCC-PR Series tank inspection lights

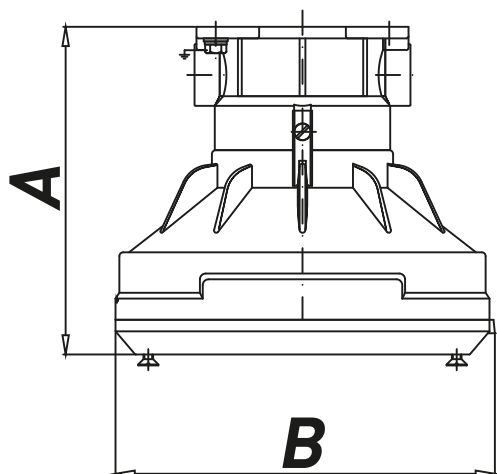


Tank inspection lights suitable for ON-SHORE and OFF-SHORE application by suitable painting cycle (upon request); LED version.

## TECHNICAL FEATURES

<b>Material</b>	Aluminium with low content of copper
<b>IP rating</b>	IP66
<b>Ambient temperature range</b>	-52°C to +40°C
<b>Approvals</b>	INERIS 01ATEX0019X (standard) TR CU (marking upon request, ordering code to be required)
<b>Marking</b>	II 2 GD Ex d IIC T5 Gb Ex tb IIIC T200°C Db IP66
<b>Gaskets</b>	O-ring made of Nitrile Rubber (NBR)
<b>Surface treatment</b>	Green colour polyurethane painting cycle RAL6003 (other colour available upon request)
<b>Entries</b>	N° 2 entries M25x1,5 (plugs and cable glands excluded)
<b>Hardware and screws</b>	AISI304 Stainless steel external hardware and screws
<b>Lamps</b>	Included
<b>Rated operation voltage (UE)</b>	230 V
<b>Frequency</b>	50/60 Hz
<b>Accessories available upon request</b>	Fixing flange for porthole

## Dimensions LED EVCC



## LED EVCC-PR tank inspection lights

TYPE	CODE	LAMP [W]	TEMP. CLASS	VOLTAGE	DIMENSIONS [mm]		AMBIENT TEMPERATURE
					A	B	
EVCC-PR3/LED	A0404.300006	7	T5	230V 50/60HZ	170	195	(-52°;+40°)*

\* Maximum admissible ambient temperature