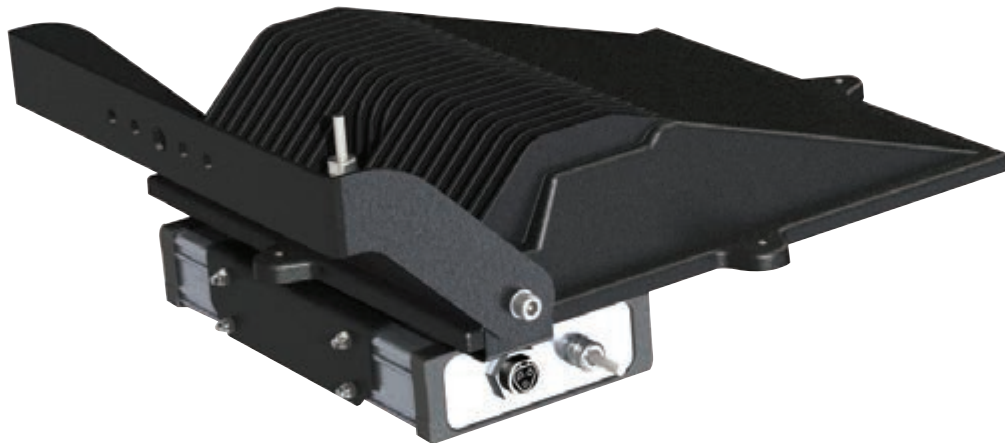


LED Flood



8

LED Flood presents the market with a high performance revelation in exterior LED area lighting.

Up to five cool white 5000°K LED arrays are integrated into the robust die-cast aluminium housing, with the purpose designed reflector delivering a range of lumen packages to suit the application. The thermal mass and design of the housing provides excellent thermal management in conjunction with the appropriate drive current to maximise LED output and ensure a long operational life with minimal maintenance and eliminating the need for lamp changes.

LEDs also provide the benefit of instant white light with no restrike delay and reduced consumption of energy over traditional HID lamps.

- Long, 50,000+ hour LED life to L70, typically 10-12 years commercial operation with no lamp changes can dramatically reduce maintenance costs
- Robust, die-cast aluminium base with adjustable fixing bracket to suit wall or column mount installations
- IP65 rated construction, ideal for exterior use and ease of cleaning

Lamp Options

- Multi-die LED arrays
- 5000°K cool white
- 65 CRI
- 700mA drive current, fixed output, >0.9pf LED driver

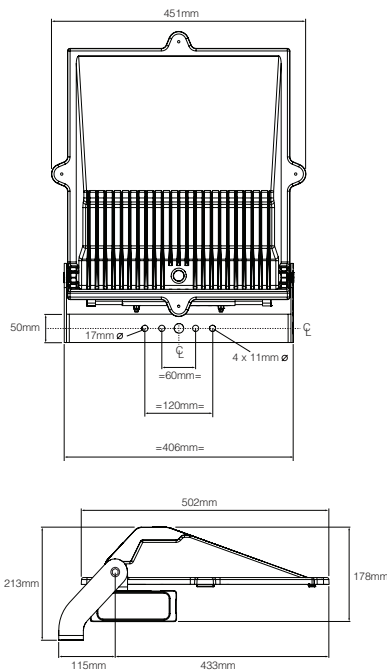
Materials

- Housing - die cast aluminium in black textured powder coated finish
- Reflectors - high purity, high reflectance, anodised aluminium
- Lens - toughened glass
- Mounting bracket - heavy gauge steel in black textured powder coat finish
- IP65 gearbox - anodised aluminium

Installation Notes

- Supplied with mounting bracket suitable for vertical or horizontal surfaces and column mounting
- Gearbox is direct mounted to the luminaire head

Dimensions



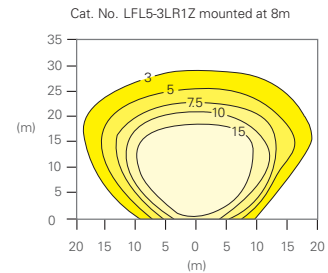
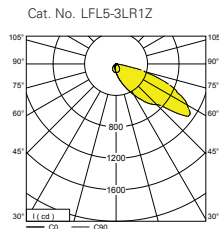
Options

- Photocell option for dusk 'til dawn operation enables automatic safety/security illumination whilst preventing wasted energy during daylight hours (to special order)
- Dimming control gear can provide further energy saving for appropriate applications
- Remote gearbox option allows low level or interior installation of the control gear (to special order)

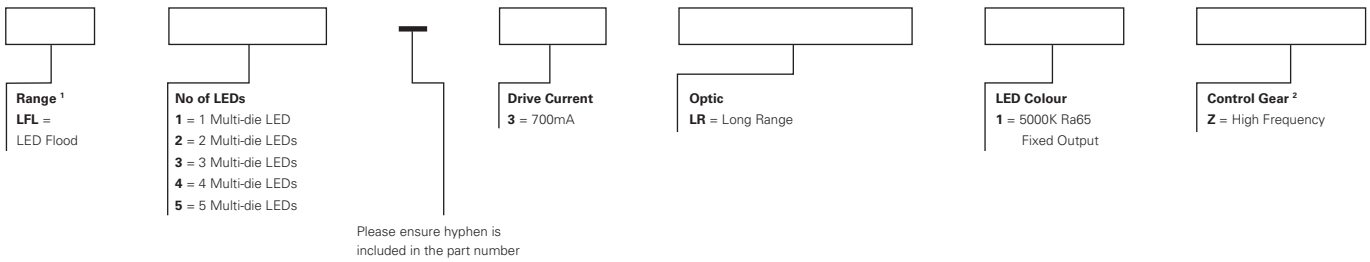
Specification

To specify state: High performance multi die LED Floodlight, die-cast aluminium housing, anti-light pollution low glare floodlight, with asymmetric reflector, finished in textured black with close coupled control gear enclosure as Eaton's LED Flood range, part no. _____

Photometric Data



Catalogue Numbers



Notes

- 1 All standard luminaires are IP65 rated with close coupled gear box
- 2 Dimmable options to special order
- Remote gear box to special order
- Photocell option to special order

Part No.	Lumen Output	Wattage	Llm/cW	Weight (kg)
LFL1-3LR1Z	3155	39	75.98	8.0
LFL2-3LR1Z	6218	83	79.92	8.5
LFL3-3LR1Z	9327	124	79.92	8.5
LFL4-3LR1Z	12436	166	79.92	9.5
LFL5-3LR1Z	15546	194	79.92	9.5

Galaxy LED



8

Galaxy LED is a new low energy solution to a varied range of applications. High efficiency is a key part of its appeal and with a wide range of outputs, is ideal in a multitude of applications.

Galaxy LED is rated to IP65, dust tight and low pressure water jet proof, with a robust die-cast aluminium body.

- High efficacy LED
- Die-cast aluminium construction for a long durable life
- IP65 dust tight and water jet proof for stay clean operation
- Inbuilt inclinometer aids aim and set up
- Outstanding optical performance reduces installed points
- Supplied with three core 1m flying lead
- 10W and 30W versions are available with integrated PIR as an option

LED Options

- Five lumen packages
- >70 CRI
- L70 30,000 hours
- 5000°K cool white

Materials

- Body - die-cast aluminium powder coated black
- Lens - toughened glass
- Reflector - high purity, high reflectance, anodised aluminium
- Stirrup - steel powder coated in black finish

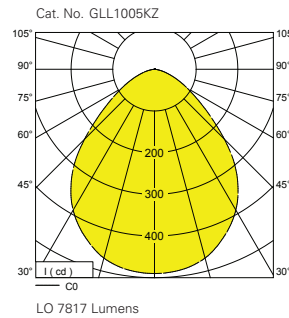
Installation Notes

- Suitable for column, wall and floor mounting
- Stirrup bolts directly to vertical surface for area floodlighting or to floor for façade lighting
- 3 way, 1 x 2.5mm² terminal block
- Aimed by slackening side bolts and positioning angle using inclinometer on stirrup
- Front lens secured by latching clip
- Supplied complete with 1m 3 core 1mm² lead

Specification

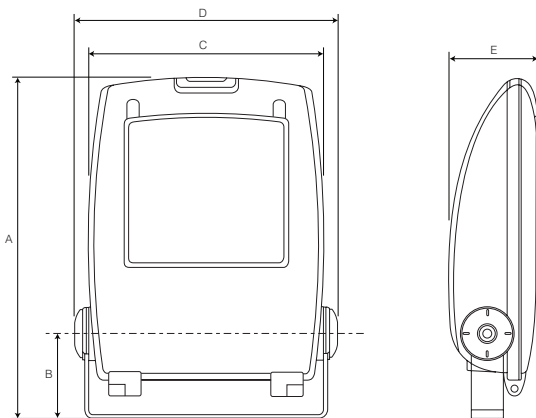
To specify state: Die cast aluminium floodlight, with symmetrical reflector and toughened safety glass. Finished in black paint finish and dust tight and water jet proof to IP65, as Eaton's Galaxy LED range, part no. _____

Photometric Data



Galaxy LED with PIR Sensor

Dimensions



	A	B	C	D	E
GLL105KZ (10W)	220	83	147	172	55
GLL105KZPIR (10W + PIR)	220	83	147	172	106
GLL305KZ (30W)	314	78	218	243	80
GLL305KZPIR (30W + PIR)	314	78	218	243	131
GLL505KZ (50W)	395	103	291	321	106
GLL1005KZ (100W)	456	119	336	380	112
GLL2005KZ (200W)	620	195	432	482	158

Catalogue Numbers

Part No	With PIR	Lumen Output	Wattage	Llm/cW	Weight (kg)	Weight + PIR (kg)
GLL105KZ	GLL105KZPIR	838	11.85	70.70	1.10	1.22
GLL305KZ	GLL305KZPIR	2655	32.80	81.30	2.97	2.99
GLL505KZ	-	4410	51.50	85.50	5.21	-
GLL1005KZ	-	7817	101.40	77.10	7.32	-
GLL2005KZ	-	17495	220.00	79.30	14.08	-

Galaxy Minor



Manufactured from tough, vandal resistant polycarbonate, Galaxy remains a popular choice for general purpose floodlighting. Compact styling and a dispersive reflector allow Galaxy to be used in a wide variety of applications, such as hotel car parks, pub signs and building façades.

As standard, all luminaires are sealed to IP65 - dust tight and water jet proof - delivering long and durable through-life service. A choice of lamp options include SON and MBI discharge types and now a low energy 42W CFL version. Integral photocell options enhance the Galaxy range, underlining its versatility.

- Tough polycarbonate base and diffuser provides high impact resistance
- IP65 dust tight and water jet proof for stay clean operation
- Low energy CFL version where energy costs are paramount
- Dusk to dawn photocell versions avoids wasted energy in daylight hours
- Supplied with lamp

Lamp Options

- 70W SON-E/I 2000°K - E27 cap
- 42W TC-T compact fluorescent, 4000°K - GX24q 4 cap
- 70W, 150W, MH-DE 4000°K - Rx7s cap



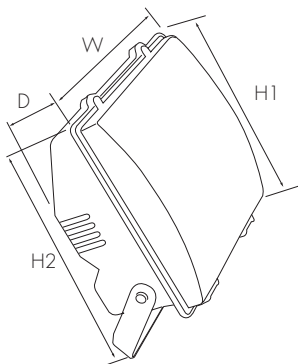
Materials

- Body - UV stabilised black polycarbonate
- Visor - UV stabilised clear polycarbonate
- Reflector - anodised aluminium
- Stirrup - steel, powder coated in black finish

Installation Notes

- Suitable for column, wall and floor mounting
- Stirrup bolts directly to surface
- Cable gland supplied for 8 - 13mm circular flex
- 3 way, 1 x 2.5mm² terminal block
- Gear mounted on removable geartray, secured by screws
- Visor retained by 2 captive screws
- Visor hinges for easy lamp replacement
- Supplied complete with lamp
- Safety distance - 0.5m

Dimensions



Options	H2 (mm)	W (mm)	H1 (mm)	D (mm)
Galaxy 42-150W	322	375	300	190

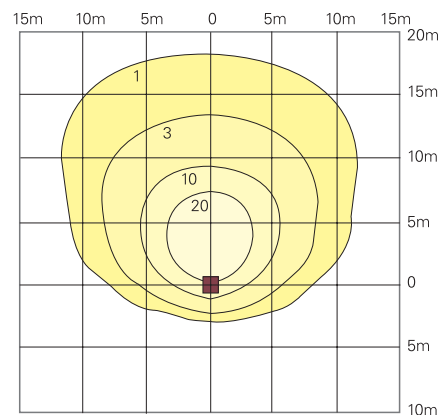
Options

- Integral photocell versions available
- Full range of columns and brackets available. See page 425
- Thermal cut out on HID lamp ballast as standard

Specification

To specify state: Polycarbonate, general purpose floodlight, dust tight and water jet proof to IP65, with high efficiency, dispersive, anodised aluminium reflector, quick release hinging polycarbonate visor, removable geartray and optional integral photocell, as Eaton's Galaxy range, part no. _____

Photometric Data



Floor Isolux
Galaxy GA70S
70W SON-E
Inclined at 55°
Mounting height = 5m

See page 532 for design guide



150W MH-DE

Catalogue Numbers

Cat No	Description	Weight (kg)
GA70S	Galaxy 70W SON-E Sodium 2000K Lamp	3.5
GA70SPEC	Galaxy 70W SON-E Sodium, with photocell 3500K Lamp	3.5
GA142Z	Galaxy 42W CFL, 4000K Lamp	3.7
GA142ZPC	Galaxy 42W CFL, with photocell, 4000K Lamp	3.7
GA70MHDE	Galaxy 70W MH-DE 4000K Lamp	4.4
GA70MHDEPC	Galaxy 70W MH-DE 4000K Lamp c/w Photocell	4.4
GA150MHDE	Galaxy 150W MH-DE 4000K Lamp	4.4
GA150MHDEPC	Galaxy 150W MH-DE 4000K Lamp c/w Photocell	4.4





Galaxy Major



Galaxy Major has been designed with an all new 'floating glass' architectural housing and solves the problem of sky glow and light trespass by employing an asymmetric reflector system. Galaxy Major is rated to IP65, dust tight and low pressure water jet proof, with a robust die-cast aluminium body providing a long and reliable service.

- Die-cast aluminium construction for a long durable life
- IP65 dust tight and water jet proof for stay clean operation
- Anti-light pollution design avoids sky glow and light trespass
- Inbuilt inclinometer aids aim and set up
- Outstanding optical performance keeps quantity required to a minimum
- Supplied with lamp

Lamp Options

- 150W, 250W, 400W SON-T, 2000°K - E40 cap 
- 150W, 250W, 400W HQI-T, 4000°K - E40 cap 

Materials

- Body - die-cast aluminium powder coated black
- Lens - toughened soda lime glass
- Reflector - high purity, high reflectance, anodised aluminium
- Stirrup - steel powder coated in black finish

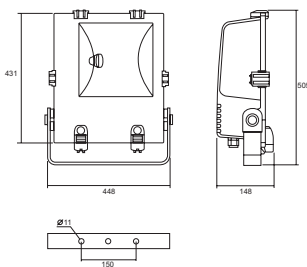
Installation Notes

- Suitable for column, wall and floor mounting
- Stirrup bolts directly to vertical surface for area floodlighting or to floor for façade lighting
- Use COLDHVB mounting bracket (order separately) if mounting on column or horizontal surface for area floodlighting
- 3 way, 1 x 2.5mm² terminal block
- Aimed by slackening side bolts and positioning angle using inclinometer on stirrup
- Front lens secured by latching clips. Hinges for easy lamp replacement
- Supplied complete with lamp
- For thermal safety, objects must not be placed within 1m of the product face
- Windage 0.193m²

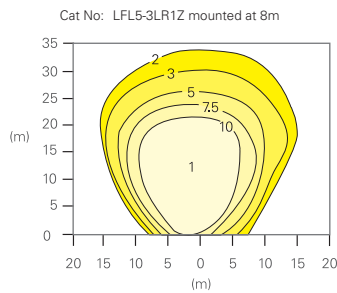
Specification

To specify state: Die cast aluminium, anti-light pollution low glare floodlight, with asymmetric reflector and toughened safety glass. Finished in black paint finish and dust tight and water jet proof to IP65, as Eaton's Galaxy Major range, part no. _____

Dimensions



Photometric Data



Polar Curve
Galaxy GA250
250W MBI
Inclined at 20°
Mounting height = 8m

See page 532 for design guide



Catalogue Numbers

Cat No	Description	Weight (kg)
GAM150S	Galaxy IP65 150W SON Floodlight c/w 2000K Lamp	11.5
GAM250S	Galaxy IP65 250W SON Floodlight c/w 2000K Lamp	11.9
GAM400S	Galaxy IP65 400W SON Floodlight c/w 2000K Lamp	12.4
GAM150MH	Galaxy IP65 150W MBI Floodlight c/w 4000K Lamp	11.5
GAM250MH	Galaxy IP65 250W MBI Floodlight c/w 4000K Lamp	11.9
GAM400MH	Galaxy IP65 400W MBI Floodlight c/w 4000K Lamp	12.4
GAMWG	Galaxy Wireguard	1.0